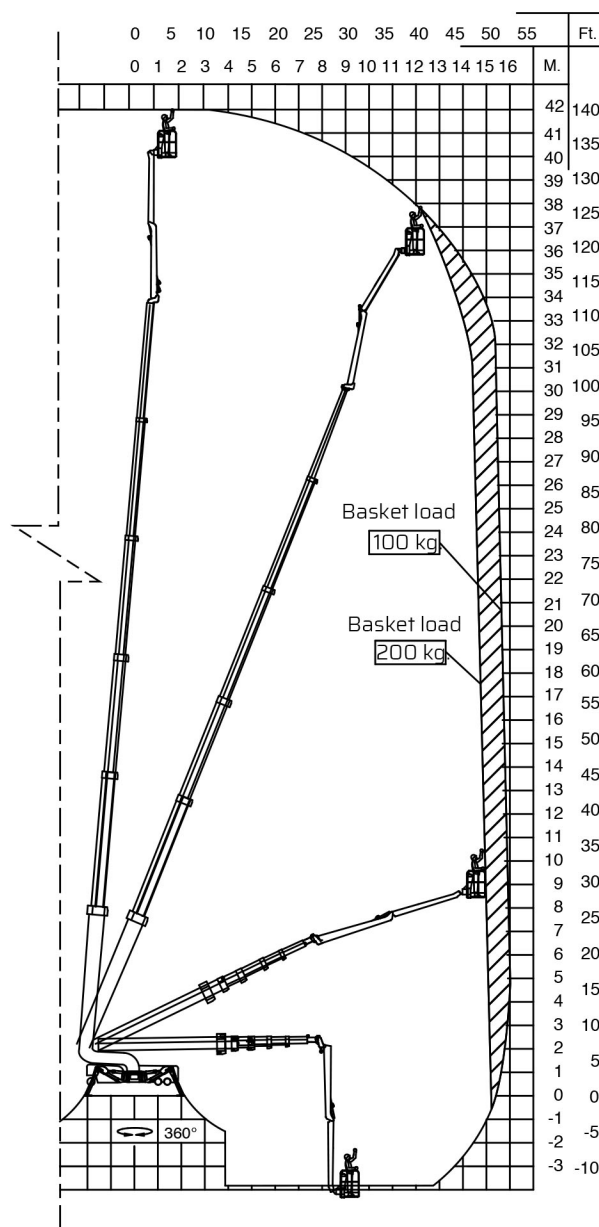
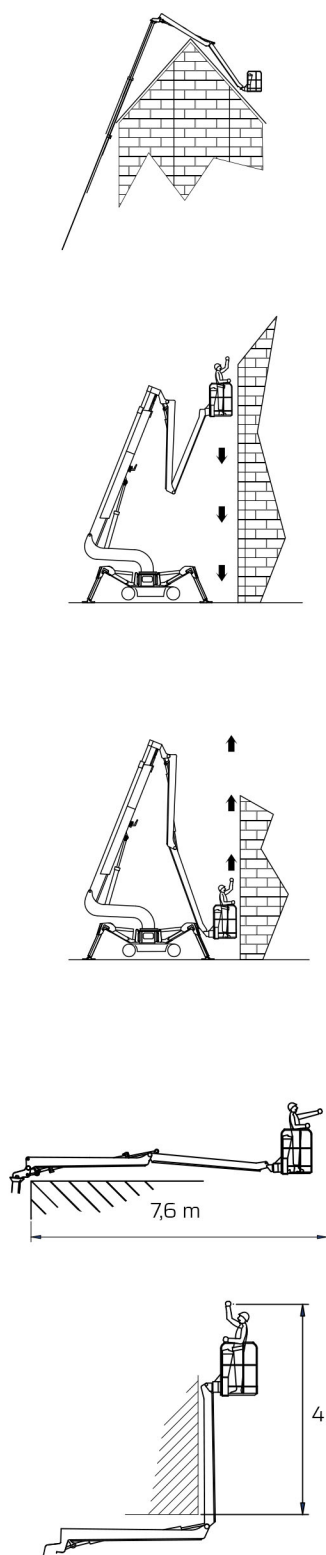
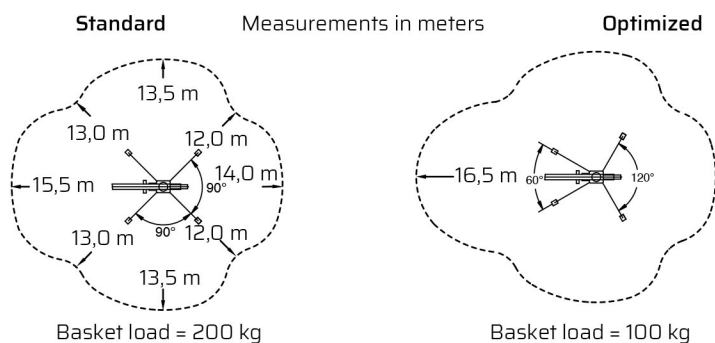


# FALCON FS 420

## Reach diagram - Optimized position

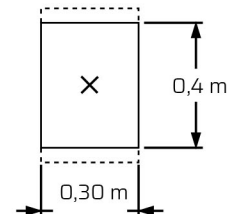
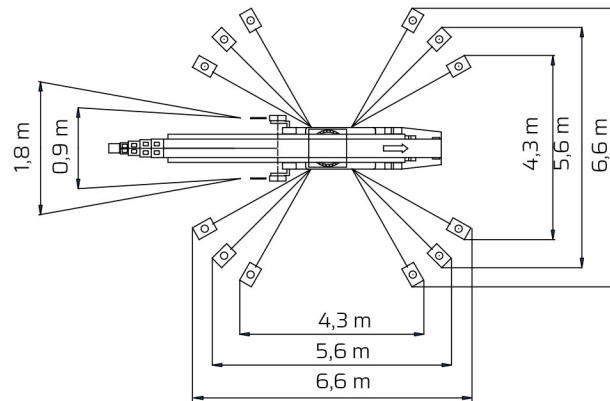
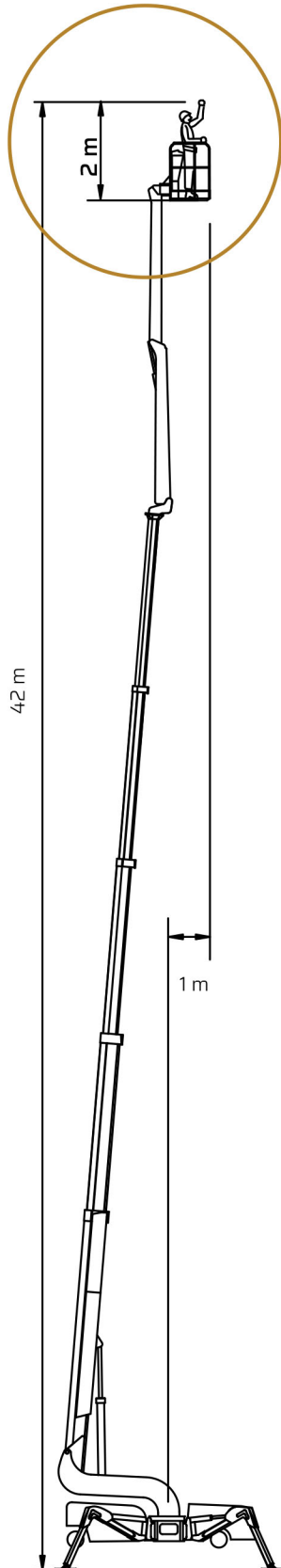


## Reach with outriggers in different positions

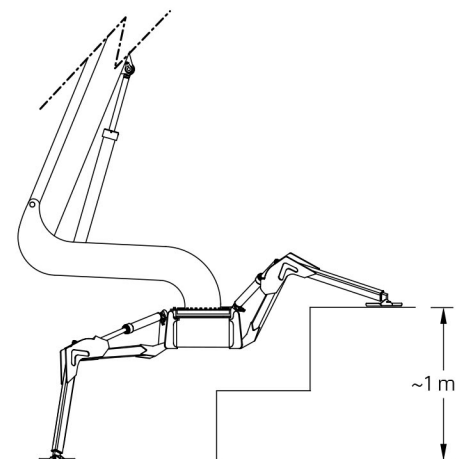
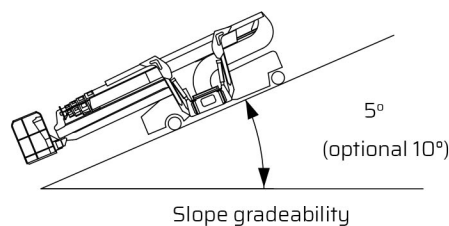
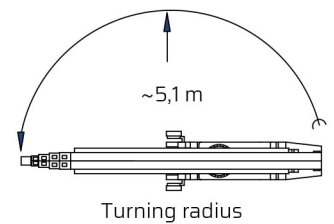
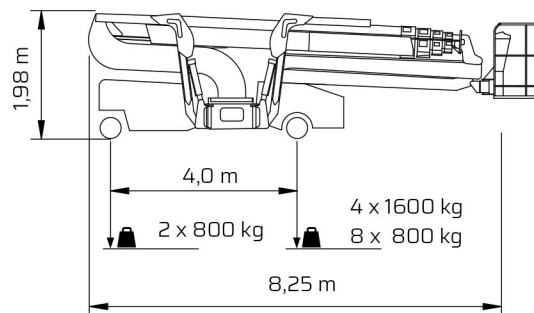


# FALCON FS 420

## Outer measurements



Outrigger plate area  
= 1200 cm<sup>2</sup>



## Additional info:

### Weight and ground pressure:

|  |           |                    |
|--|-----------|--------------------|
| Weight with standard equipment                         | 8000      | kg.                |
| Max. ground pressure under 1 wheel (with 4 rear wheel) | 6,8       | kg/cm <sup>2</sup> |
| Max. ground pressure under 1 wheel (with 8 rear wheel) | 3,7       | kg/cm <sup>2</sup> |
| Max. ground pressure under 1 outrigger plate           | 3,0       | kg/cm <sup>2</sup> |
| Front wheel area (depending on wheel type)             | 2 x ~ 216 | cm <sup>2</sup>    |
| Rear wheel area (depending on wheel type)              | 4 x ~ 234 | cm <sup>2</sup>    |